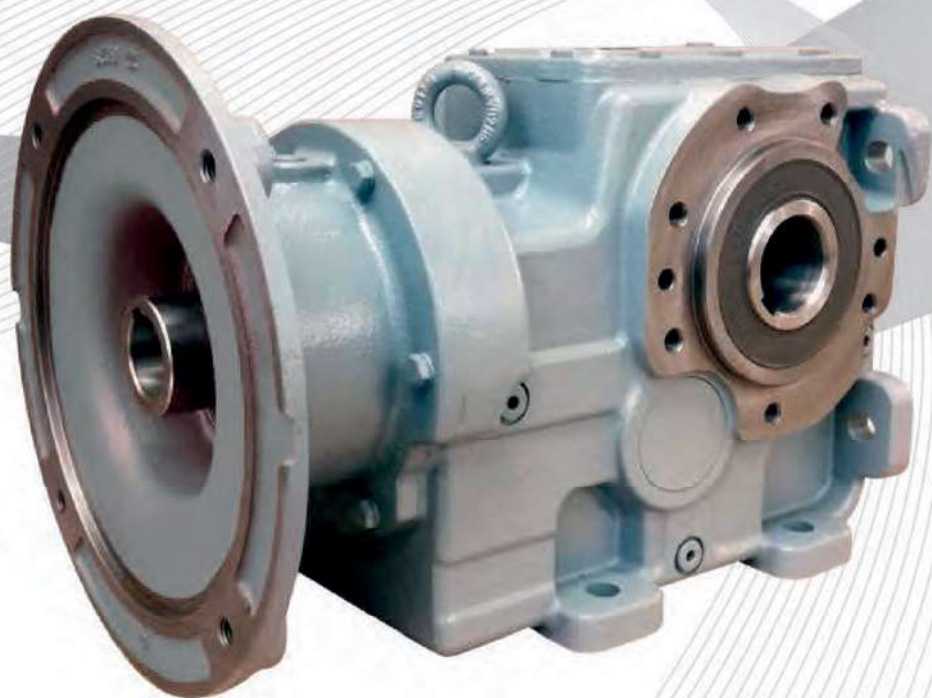


CHG – СЕРИЯ К



Таблицы с размери

Maßtabellen

Размерни таблици

Таблицы с размери

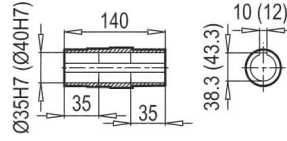
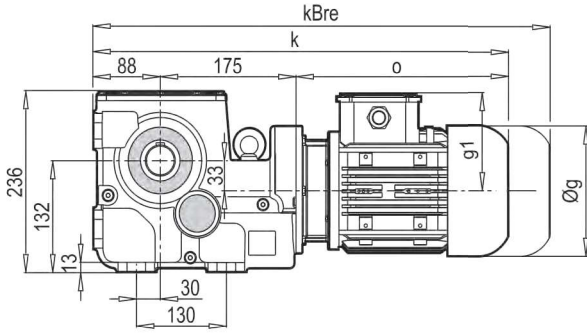
Таблицы с размери

K...
35390 - 100390

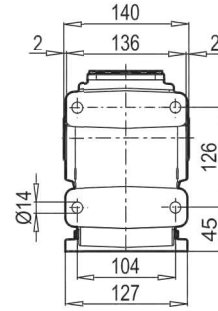


K...

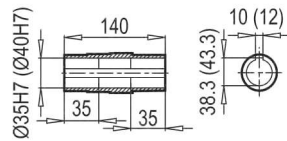
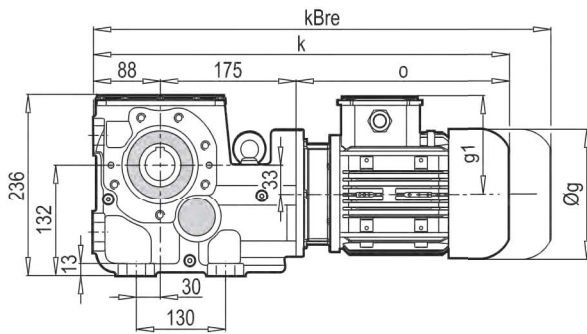
K 35390 DA



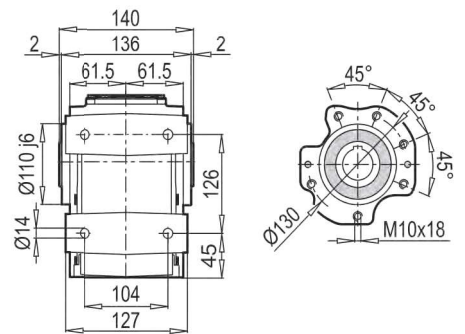
DA



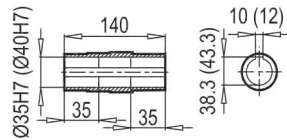
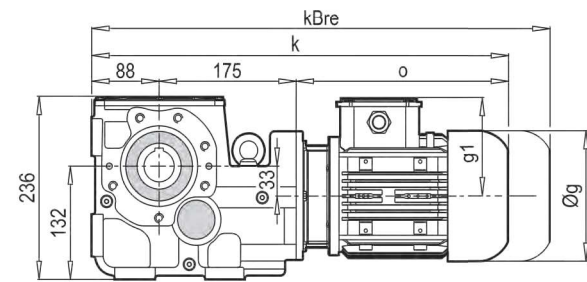
K 35390 DA/B14



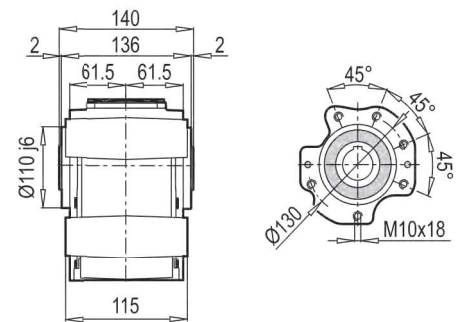
DA / B14



K 35390 DG/B14



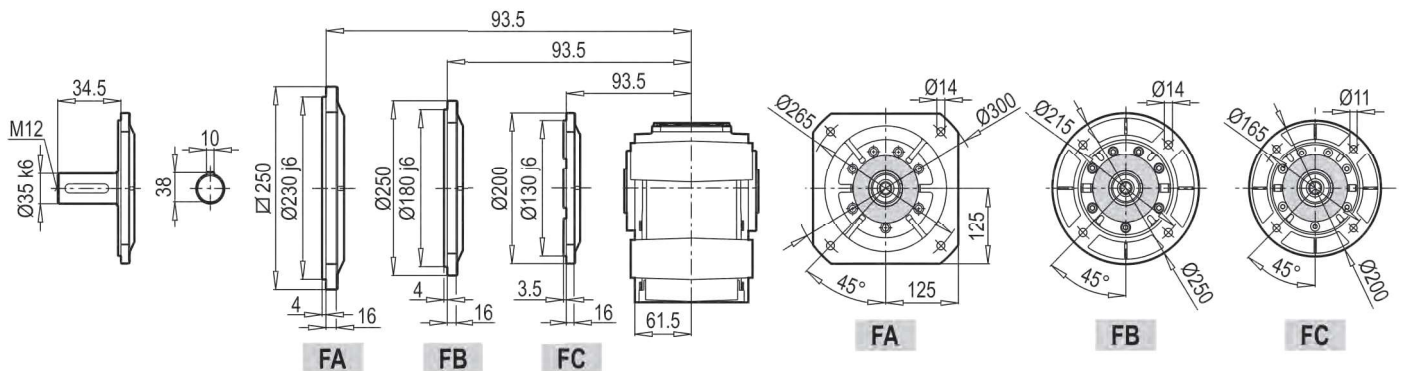
DG / B14



TMG / B5

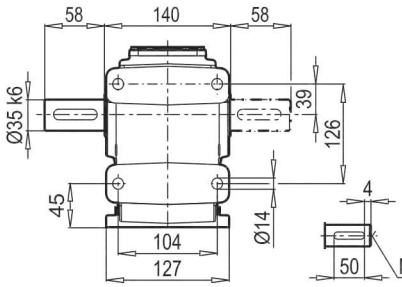
DG / B5

DA / B 14

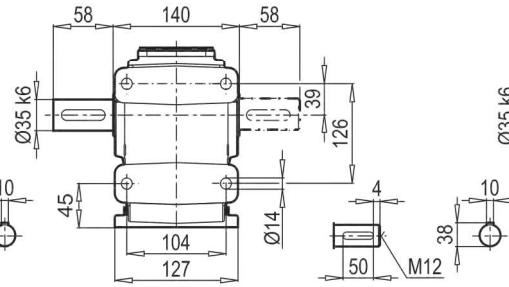


	63M	71M	80M	90S	90L	100L	112M		
g	124	140	159	193	193	217	232		
g1	111	119	127	151	151	160	168		
k	475	504	530	576	596	597	647		
kBre	527	564	592	649	669	678	727		
o	212	241	267	313	333	334	384		

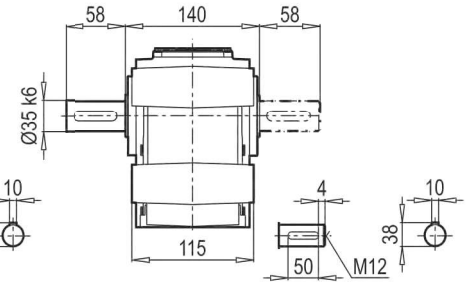
TMA / ÇMA



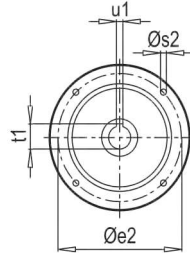
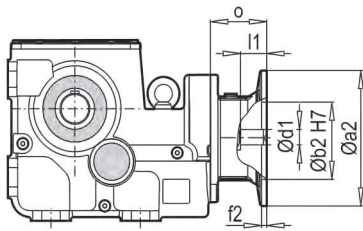
TMA / ÇMA / B14



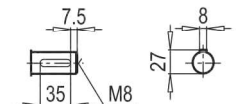
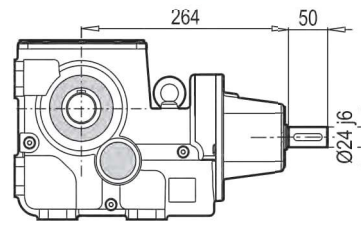
TMG / ÇMG / B14



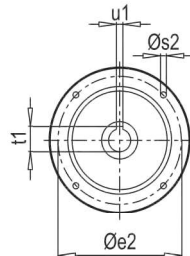
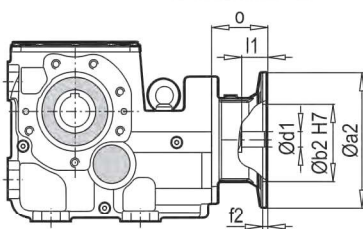
K 35390 DA PAM B5/B14



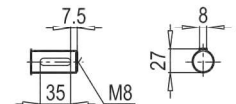
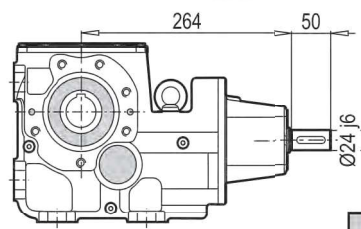
K 35390 DA W



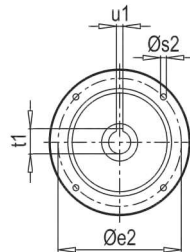
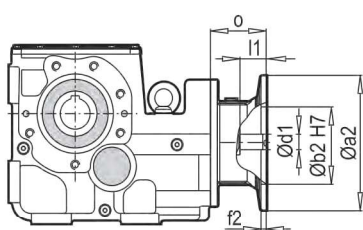
K 35390 DA/B14 PAM B5/B14



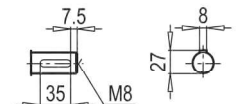
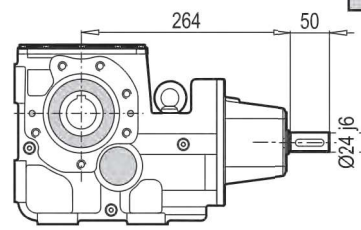
K 35390 DA/B14 W



K 35390 DG/B14 PAM B5/B14



K 35390 DG/B14 W



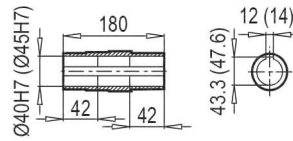
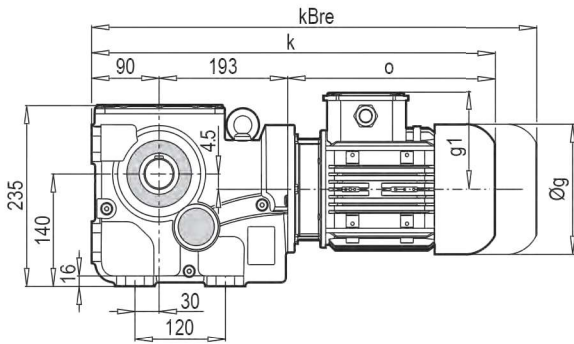
	24
--	----

Тип / Type Тип / Tipo Тип / Tipo	PAM B5	Øa2	Øb2	Øe2	f2	Øs2	Ød1	l1	t1	u1	o
K 35390	63	140	95	115	4.5	8	11	25	12.8	4	57
	71	160	110	130	5	8	14	32	16.3	5	69
	80	200	130	165	5	10	19	42	21.8	6	90
	90	200	130	165	5	10	24	52	27.3	8	90
	100	250	180	215	5.5	12	28	62	31.3	8	105
	112	250	180	215	5.5	12	28	62	31.3	8	105

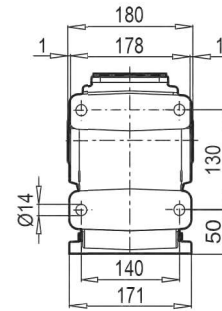
~ K	
PAM B5/B14	K 35390
63	21
71	22
80	23
90	23
100	27
112	27

Тип / Type Тип / Tipo Тип / Tipo	PAM B14	Øa2	Øb2	Øe2	f2	Øs2	Ød1	l1	t1	u1	o
K 35390	63	90	60	75	2.5	6	11	25	12.8	4	57
	71	105	70	85	2.5	7	14	32	16.3	5	69
	80	120	80	100	3	7	19	42	21.8	6	90
	90	140	95	115	3	9	24	52	27.3	8	90
	100	160	110	130	3.5	9	28	62	31.3	8	105
	112	160	110	130	3.5	9	28	62	31.3	8	105

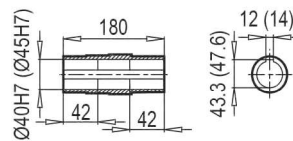
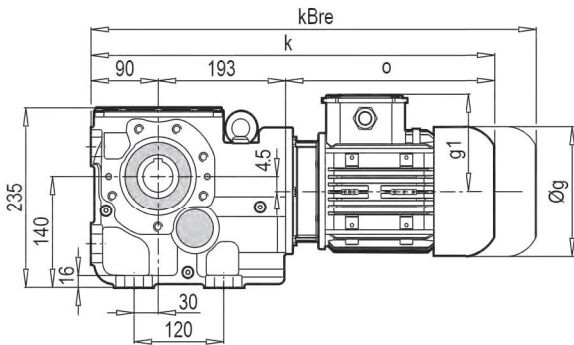
K 40390 DA



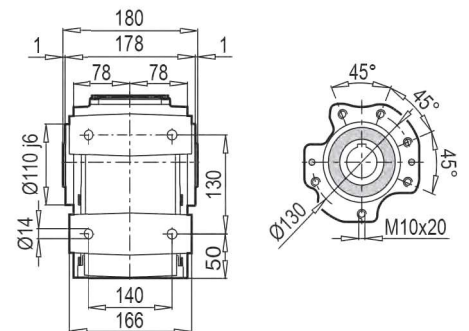
DA



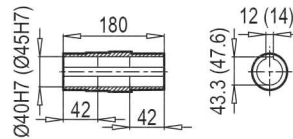
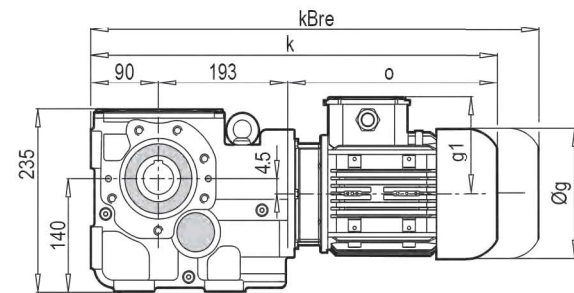
K 40390 DA/B14



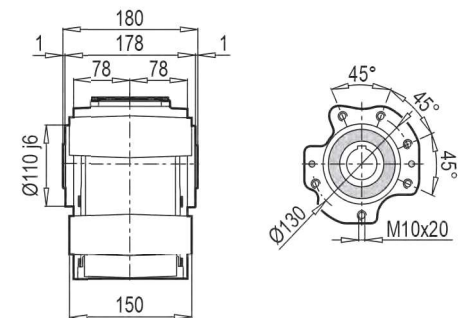
DA / B14



K 40390 DG/B14



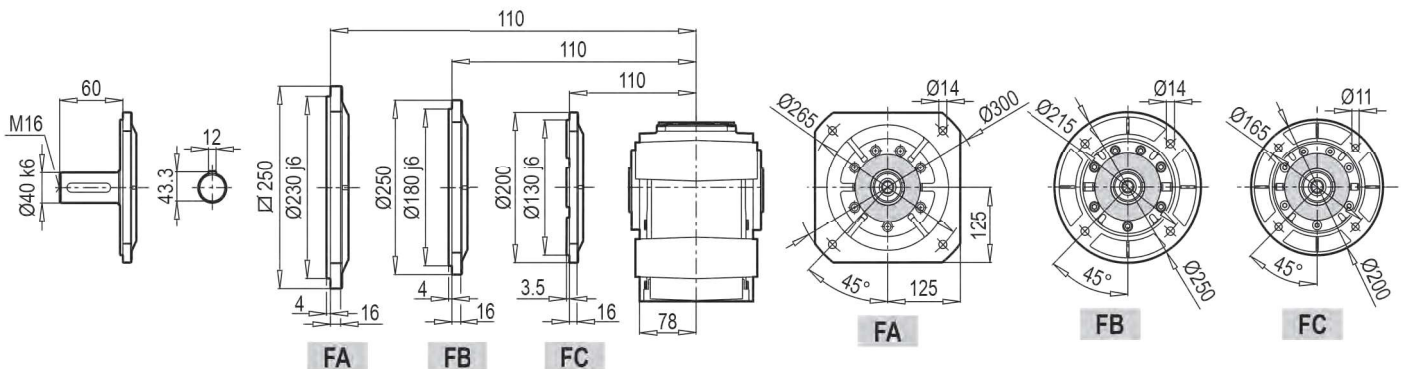
DG / B14



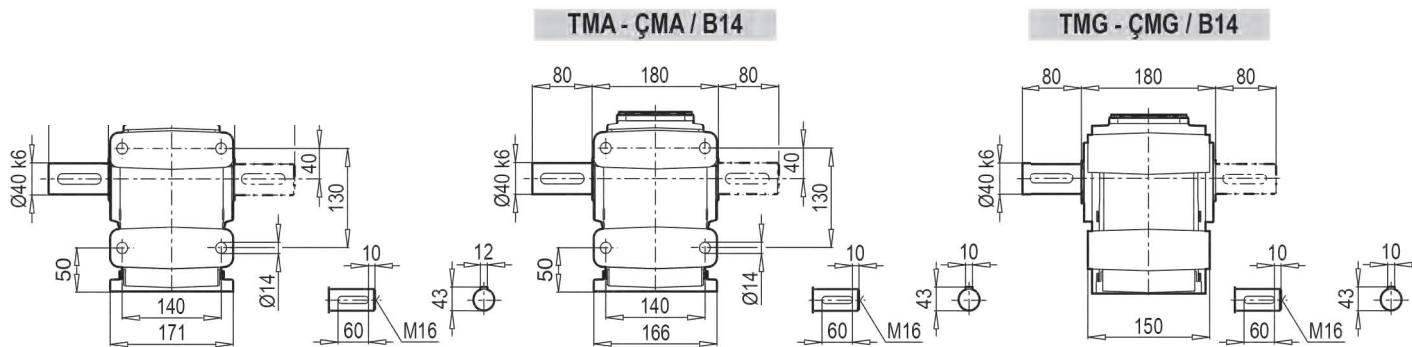
TMG / B5

DG / B5

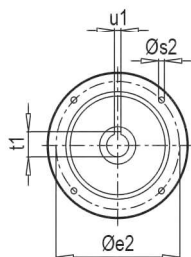
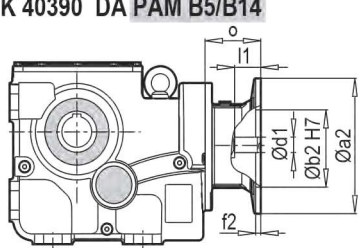
DA/B14



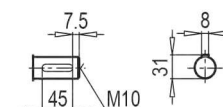
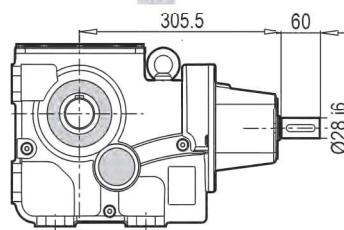
	80M	90S	90L	100L	112M	132S	132M		
g	159	193	193	217	232	279	279		
g1	127	151	151	160	168	182	182		
k	530	576	596	619	672	679	714		
kBre	592	649	669	700	752	787	855		
o	247	293	313	336	389	396	431		



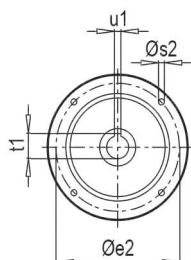
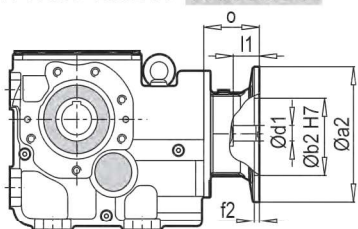
K 40390 DA PAM B5/B14



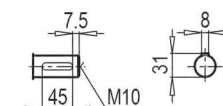
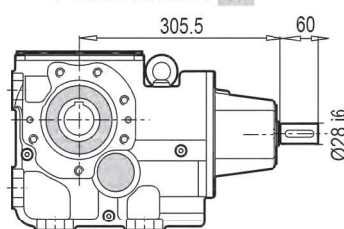
K 40390 W



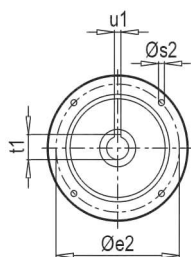
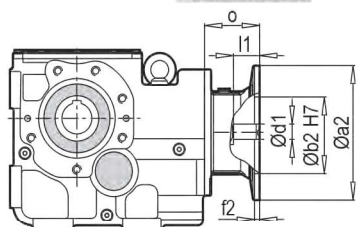
K 40390 DA/B14 PAM B5/B14



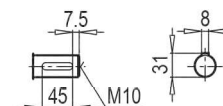
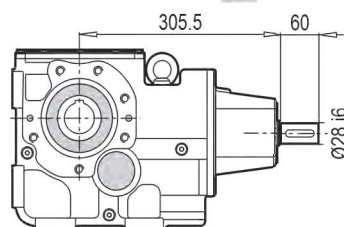
K 40390 DA/B14 W



K 40390 DG/B14 PAM B5/B14



K 40390 DG/B14 W



	35
--	----

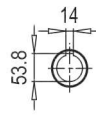
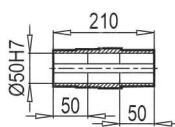
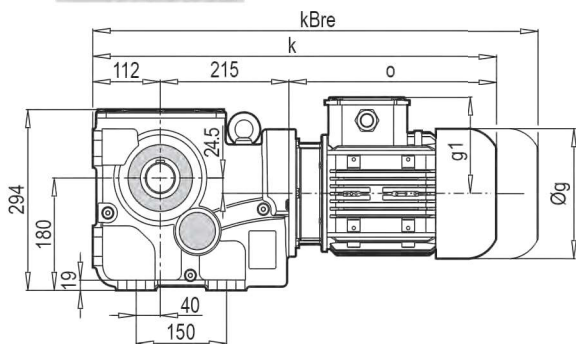
Тип / Туре Тип / Типо Тип / Типо	PAM B5	Øa2	Øb2	Øe2	f2	Øs2	Ød1	l1	t1	u1	o
K 40390	80	200	130	165	5	10	19	42	21.8	6	70
	90	200	130	165	5	10	24	52	27.3	8	70
	100	250	180	215	5.5	12	28	62	31.3	8	85
	112	250	180	215	5.5	12	28	62	41.3	8	85
	132	300	230	265	5.5	12	38	82	31.3	10	110

PAM B5/B14	K 40390
80	33
90	33
100	35
112	35
132	39

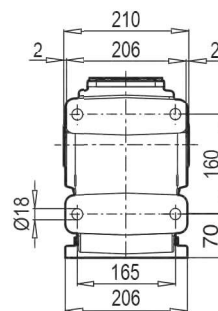
Тип / Туре Тип / Типо Тип / Типо	PAM B14	Øa2	Øb2	Øe2	f2	Øs2	Ød1	l1	t1	u1	o
K 40390	80	120	80	100	3	7	19	42	21.8	6	70
	90	140	95	115	3	9	24	52	27.3	8	70
	100	160	110	130	3.5	9	28	62	31.3	8	85

□ 132 250 130 135 35 1 28 62 413 10 до

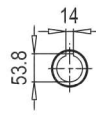
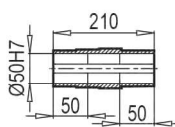
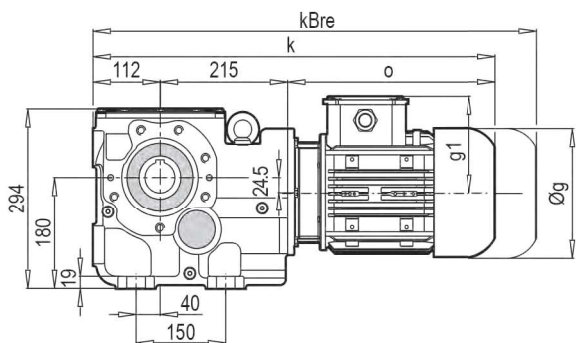
K 50390 DA



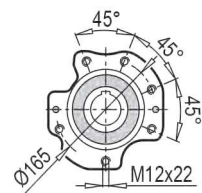
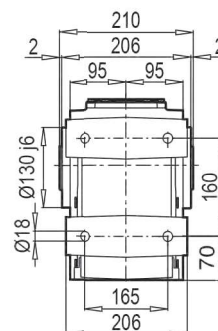
DA



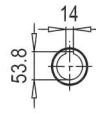
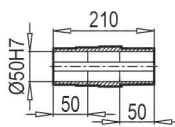
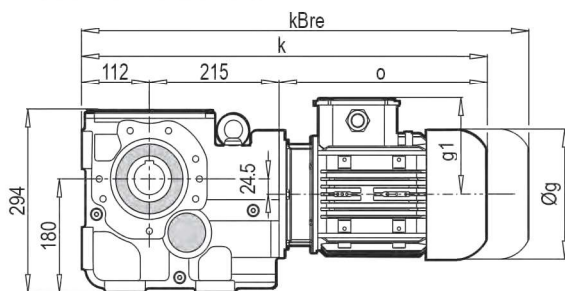
K 50390 DA/B14



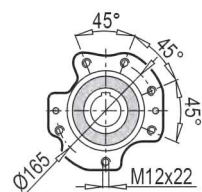
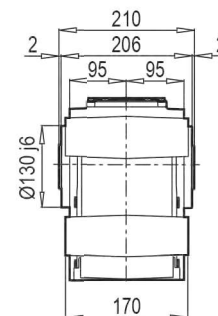
DA/B14



K 50390 DG/B14



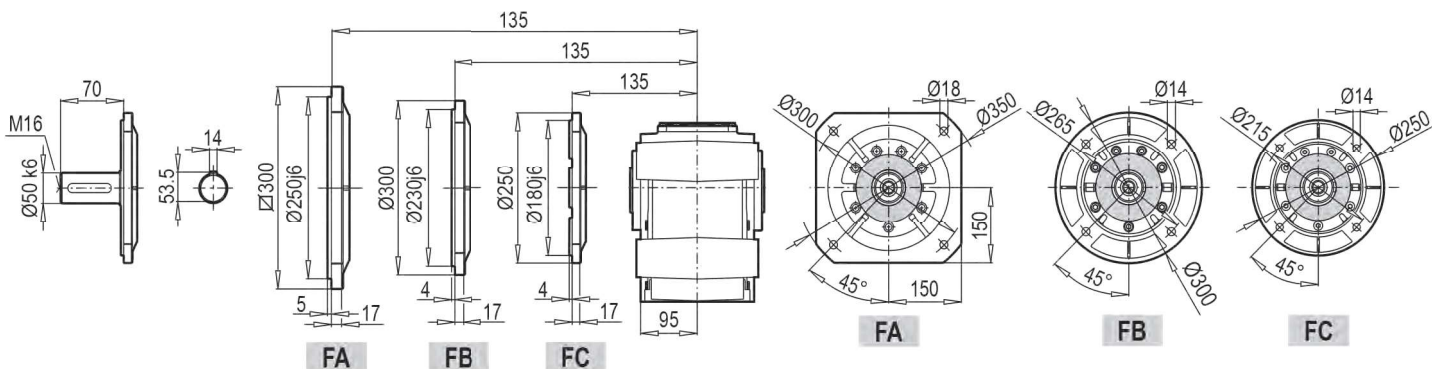
DG/B14



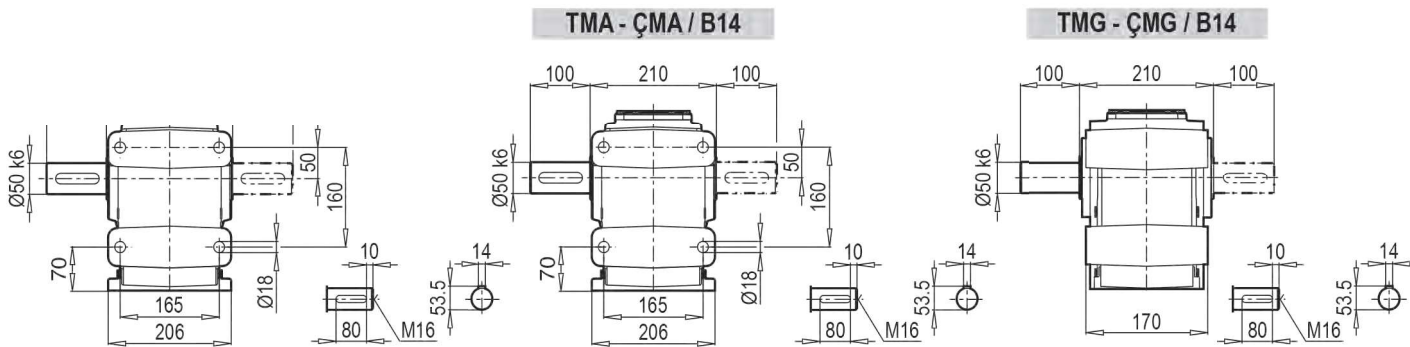
TMG/B5

DG/B5

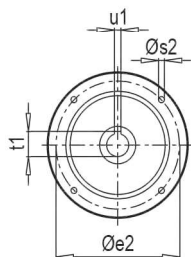
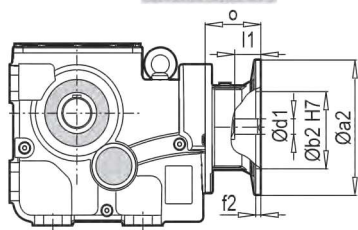
DA/B14



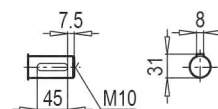
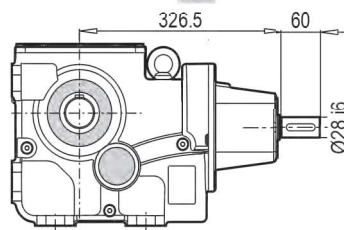
	80M	90S	90L	100L	112M	132S	132M	160M/L	
g	159	193	193	217	232	279	279	323	
g1	127	151	151	160	168	182	182	200	
k	574	620	640	663	716	723	758	845	
kBre	636	693	713	744	796	831	899	997	
o	247	293	313	336	389	396	431	518	



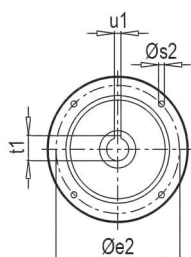
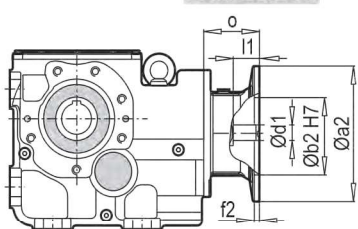
K 50390 DA PAM B5/B14



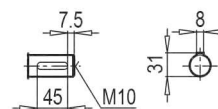
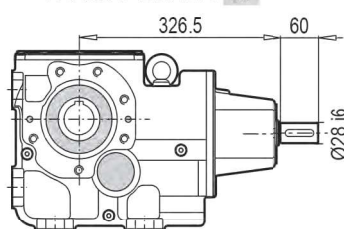
K 50390 DA W



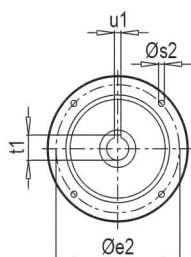
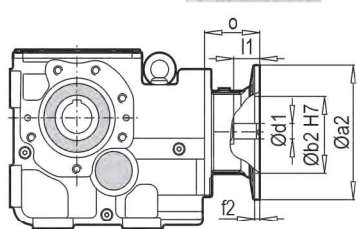
K 50390 DA/B14 PAM B5/B14



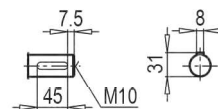
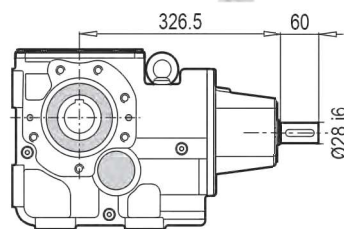
K 50390 DA/B14 W



K 50390 DG/B14 PAM B5/B14



K 50390 DG/B14 W



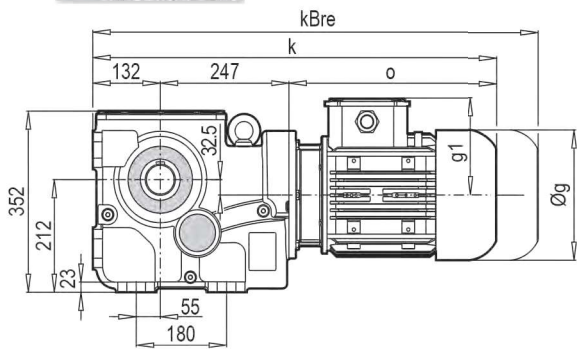
W - K 50390	
K 50390	61

Тип / Type Тип / Tipo Тип / Tipo	PAM B5	Øa2	Øb2	Øe2	f2	Øs2	Ød1	l1	t1	u1	o
K 50390	80	200	130	165	5	10	19	42	21.8	6	70
	90	200	130	165	5	10	24	52	27.3	8	70
	100	250	180	215	5.5	12	28	62	31.3	8	85
	112	250	180	215	5.5	12	28	62	31.3	8	85
	132	300	230	265	5.5	12	38	82	41.3	10	110
	160	350	250	300	7	16	42	112	45.3	12	158

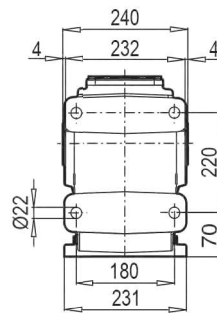
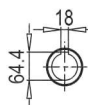
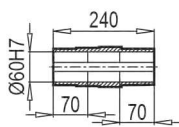
W - K 50390	
PAM B5/B14	K 50390
80	59
90	59
100	61
112	61
132	65
160	72

Тип / Type Тип / Tipo Тип / Tipo	PAM B14	Øa2	Øb2	Øe2	f2	Øs2	Ød1	l1	t1	u1	o
K 50390	80	120	80	100	3	7	19	42	21.8	6	70
	90	140	95	115	3	9	24	52	27.3	8	70
	100	160	110	130	3.5	9	28	62	31.3	8	85
	112	160	110	130	3.5	9	28	62	31.3	8	85
	132	200	130	165	3.5	11	38	82	41.3	10	110

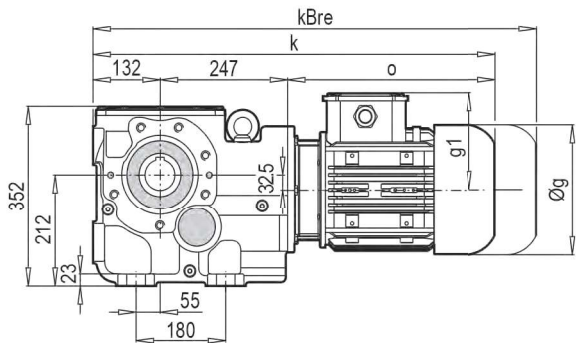
K 60390 DA



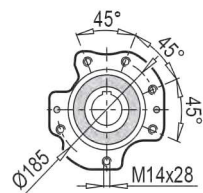
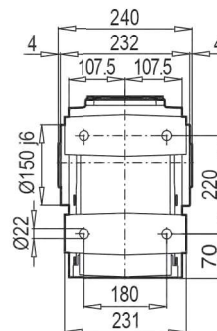
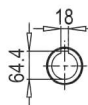
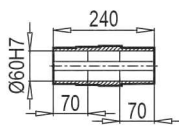
DA



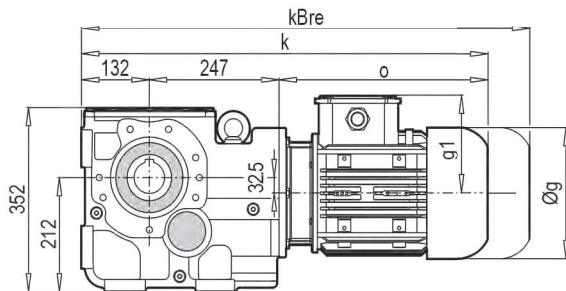
K 60390 DA/B14



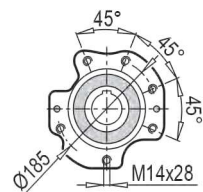
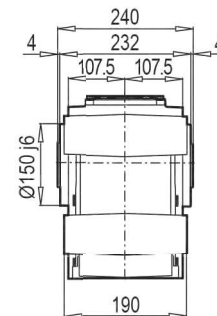
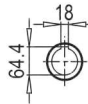
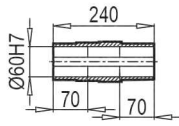
DA / B14



K 60390 DG/B14



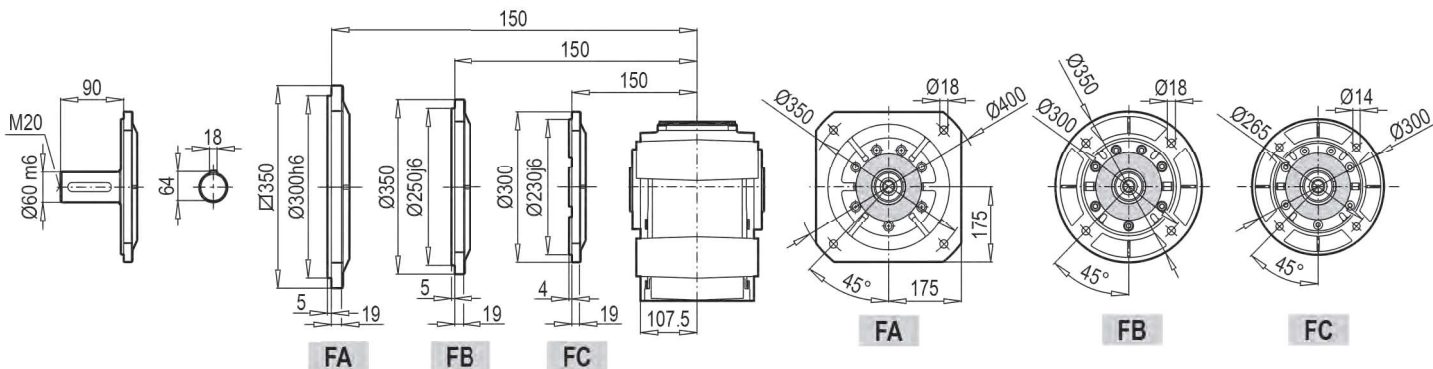
DG / B14



TMG / B5

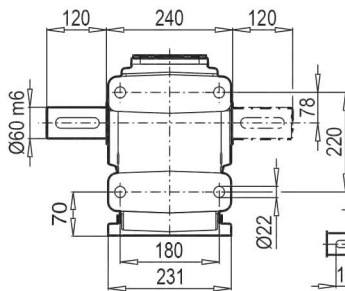
DG / B5

DA/B14

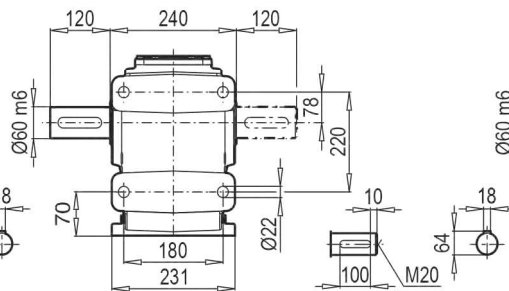


	90S	90L	100L	112M	132S	132M	160M/L	180M/L	
g	193	193	217	232	279	279	323	370	
g1	151	151	160	168	182	182	200	248	
k	662	682	705	759	765	800	887	952	
kBre	735	755	786	839	873	941	1039	1114	
o	283	303	326	380	386	421	508	573	

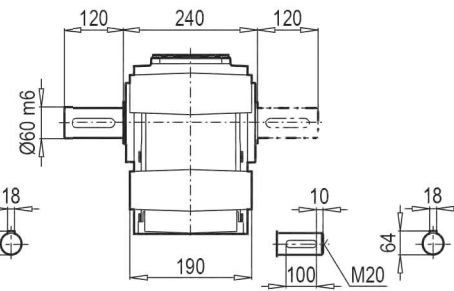
TMA - ÇMA



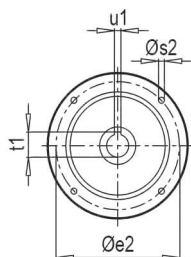
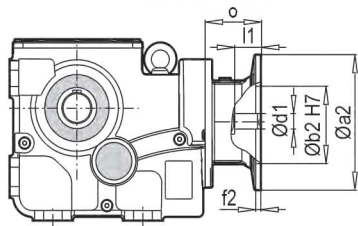
TMA - ÇMA / B14



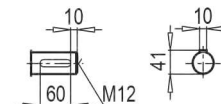
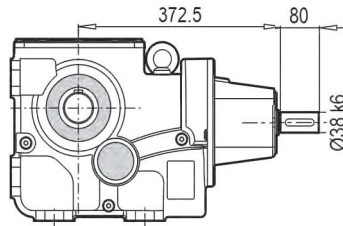
TMG - ÇMG / B14



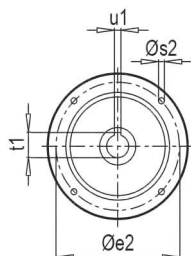
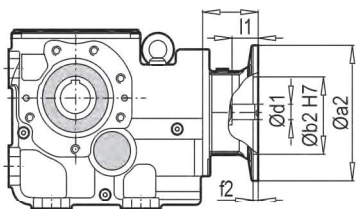
K 60390 DA PAM B5/B14



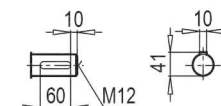
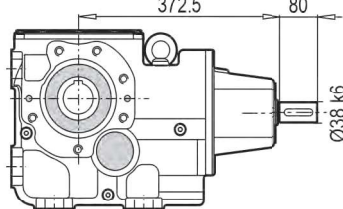
K 60390 DA W



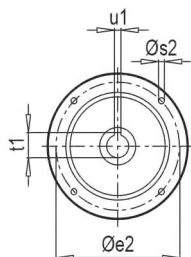
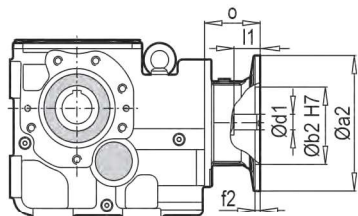
K 60390 DA/B14 PAM B5/B14



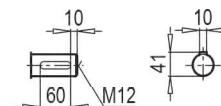
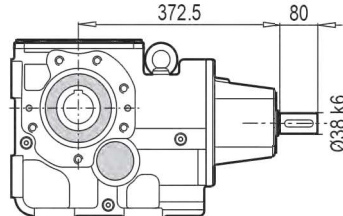
K 60390 DA/B14 W



K 60390 DG/B14 PAM B5/B14



K 60390 DG/B14 W



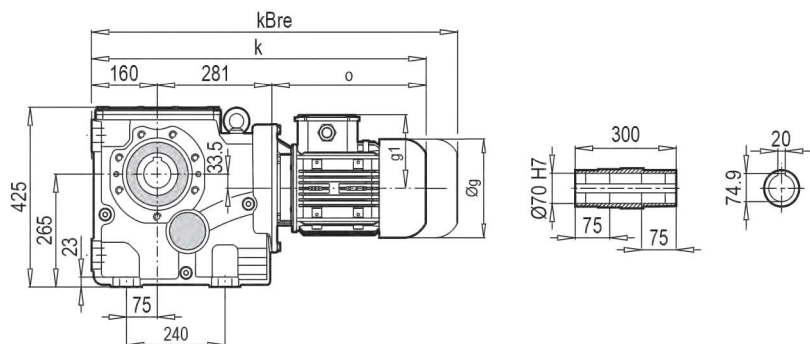
	89
--	----

Тип / Туре Тип / Тіро Тип / Тіро	PAM B5	Øa2	Øb2	Øe2	f2	Øs2	Ød1	l1	t1	u1	o
K 60390	90	200	130	165	5	10	24	52	27.3	8	61
	100	250	180	215	5.5	12	28	62	31.3	8	76
	112	250	180	215	5.5	12	28	62	31.3	8	76
	132	300	230	265	5.5	12	38	82	41.3	10	101
	160	350	250	300	7	16	42	112	45.3	12	148
	180	350	250	300	7	16	48	112	51.8	14	148

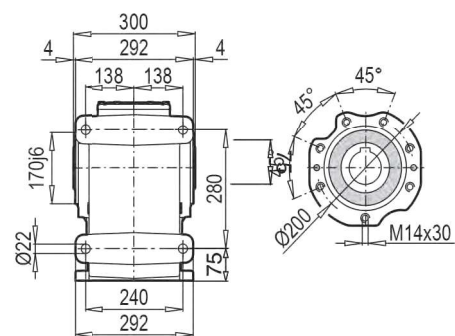
PAM B5/B14	K 60390
90	80
100	84
112	84
132	87
160	93
180	93

Тип / Туре Тип / Тіро Тип / Тіро	PAM B14	Øa2	Øb2	Øe2	f2	Øs2	Ød1	l1	t1	u1	o
K 60390	90	140	95	115	3	9	24	52	27.3	8	61
	100	160	110	130	3.5	9	28	62	31.3	8	76
	112	160	110	130	3.5	9	28	62	31.3	8	76
	132	200	130	165	3.5	11	38	82	41.3	10	101

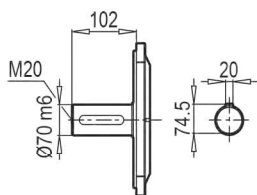
K 70390 DA/B14



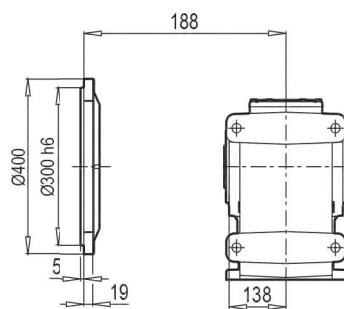
DA / B14



TMG / B5

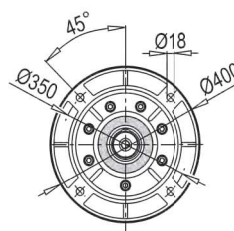


DG / B5



FB

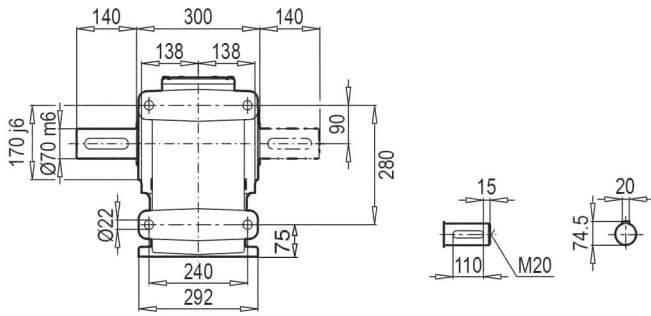
DA/B14



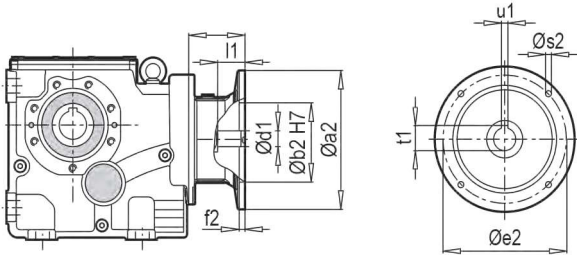
FB

	100L	112M	132S	132M	160M/L	180M/L	200L		
g	217	232	279	279	323	370	415		
g1	160	168	182	182	200	248	260		
k	767	821	827	862	949	1014	1051		
kBre	848	901	935	1003	1101	1176	1198		
o	326	380	386	421	508	573	610		

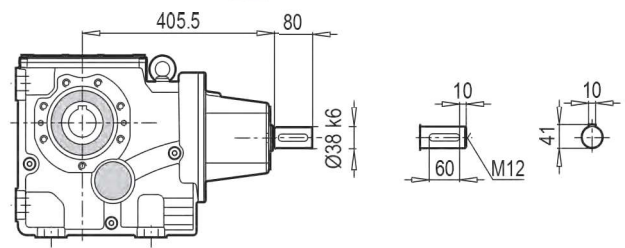
TMA - ÇMA / B14



K 70390 DA/B14 PAM B5/B14




K 70390 DA/B14 W



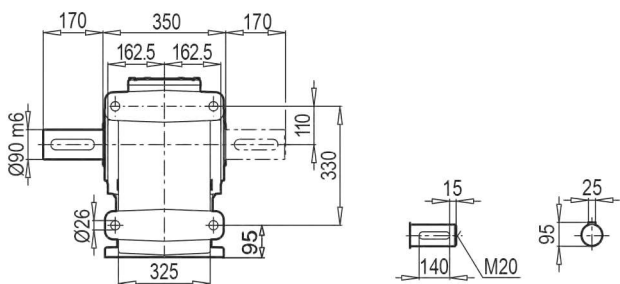
	
K 70390	134.5

Tip / Type Typ / Tipo Type / Типо	PAM B5	Øa2	Øb2	Øe2	f2	Øs2	Ød1	l1	t1	u1	o
K 70390	100	250	180	215	5.5	12	28	62	31.3	8	76
	112	250	180	215	5.5	12	28	62	31.3	8	76
	132	300	230	265	5.5	12	38	82	41.3	10	101
	160	350	250	300	7	16	42	112	45.3	12	148
	180	350	250	300	7	16	48	112	51.8	14	148
	200	400	300	350	7	16	55	112	59.3	16	185

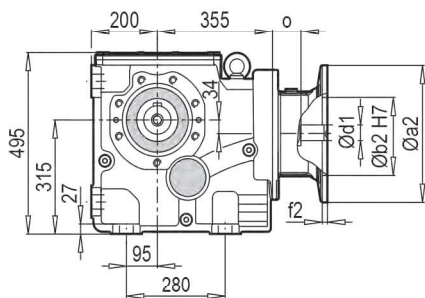
	
PAM B5B14	K 70390
100	129.5
112	129.5
132	132.5
160	138.5
180	138.5
200	154.5

Тип / Type Тип / Tipo Type / Типо	PAM B14	Øa2	Øb2	Øe2	f2	Øs2	Ød1	l1	t1	u1	o
K 70390	100	160	110	130	3.5	9	28	62	31.3	8	76
	112	160	110	130	3.5	9	28	62	31.3	8	76
	132	200	130	165	3.5	11	38	82	41.3	10	101

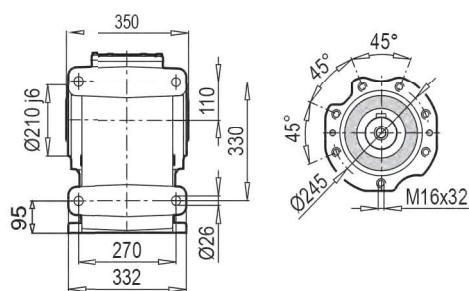
TMA - ÇMA / B14



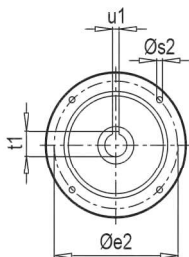
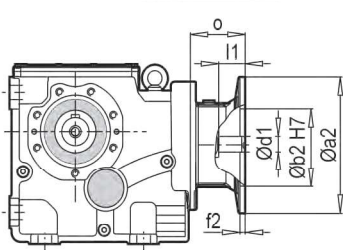
K 90390 DA/B14 PAM B5/B14



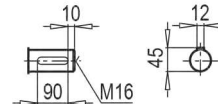
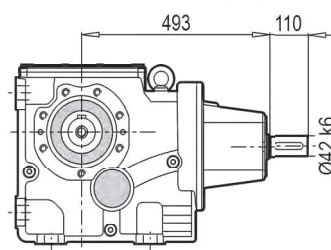
DA / B14



K 90390 DA/B14 PAM B5/B14

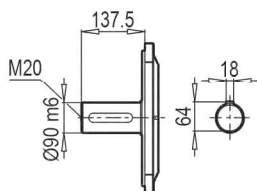


K 90390 DA/B14 W

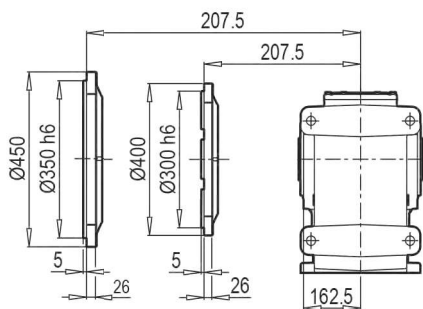


K 90390	216.5

TMA / B5



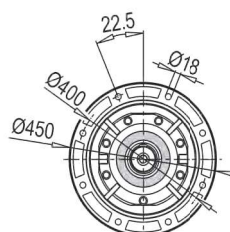
DG / B5



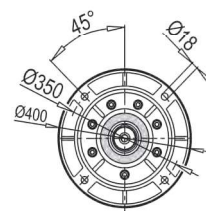
FB

FC

DA/B14



FB

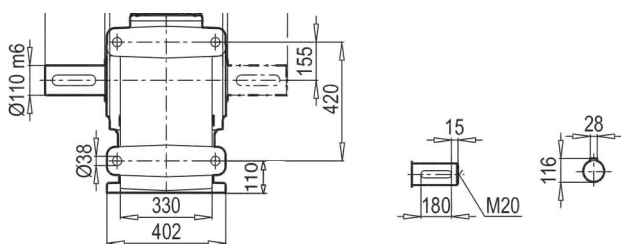


FC

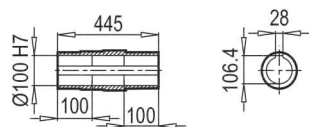
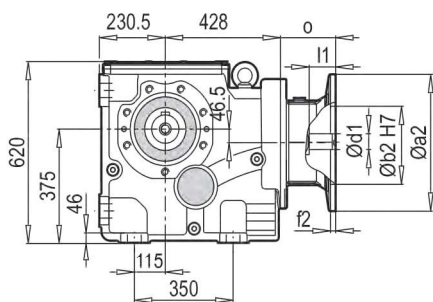
Тип / Type Тип / Tipo Тип / Tipo	PAM B5	Øa2	Øb2	Øe2	f2	Øs2	Ød1	l1	t1	u1	o
K 90390	132	300	230	265	5.5	12	38	82	41.3	10	76
	160	350	250	300	7	16	42	112	45.3	12	124
	180	350	250	300	7	16	48	112	51.8	14	124
	200	400	300	350	7	16	55	112	59.3	16	161
	225	450	350	400	7	16	60	142	64.4	18	161

Тип / Type Тип / Tipo Тип / Tipo	PAM B5/B14	K 90390
	132	203.5
	160	211.5
	180	211.5
	200	226.5
	225	229.5

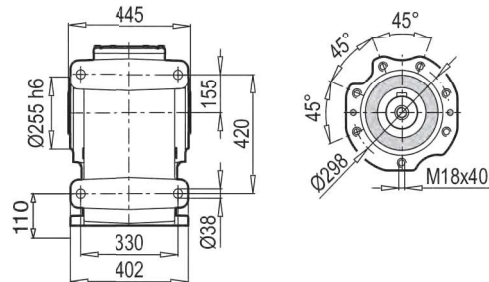
Typ / Type Typ / Tipo Type / Tipo	PAM B14	Øa2	Øb2	Øe2	f2	Øs2	Ød1	l1	t1	u1	o
K 90390	132	200	130	165	3.5	11	38	82	41.3	10	76



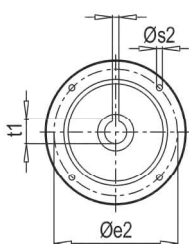
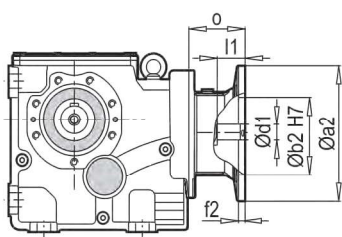
K 100390 DA/B14 PAM B5/B14



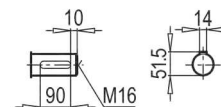
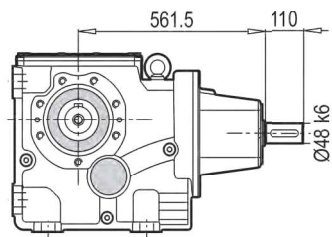
DA / B14



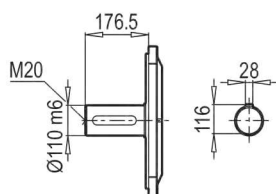
K 100390 DA/B14 PAM B5/B14



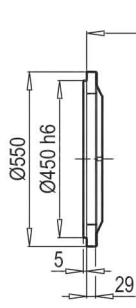
K 100390 DA/B14 W



TMA / B5

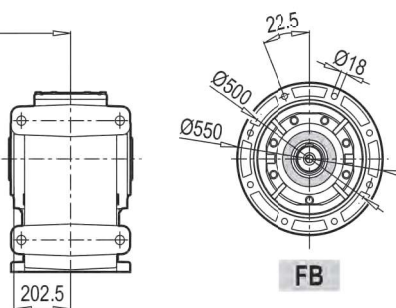


DA / B5



FB

DA/B14



FB

K 100390	460

Тип / Type Тип / Тіро Тип / Типо	PAM B5	Øa2	Øb2	Øe2	f2	Øs2	Ød1	l1	t1	u1	o
K 100390	160	350	250	300	7	16	42	112	45.3	12	109
	180	350	250	300	7	16	48	112	51.8	14	109
	200	400	300	350	7	16	55	112	59.3	16	146
	225	450	350	400	7	16	60	142	64.4	18	146
	250	550	450	500	7	16	65	142	69.4	18	175
	280	550	450	500	7	16	75	142	79.9	20	175

PAM B5	K 100390
160	390
180	390
200	455
225	461
250	480
280	480

**Таблицы за избор
на W - PAM - IEC адаптери**

**Таблица за избор на W -
PAM - IEC адаптери**

Таблица на технически харак-
теристики W - PAM, налични

**Таблица за избор на W
- PAM - IEC адаптер**

**Таблица за избор на
W - PAM - IEC адаптер**

K...

**K...
35390 - 100390**



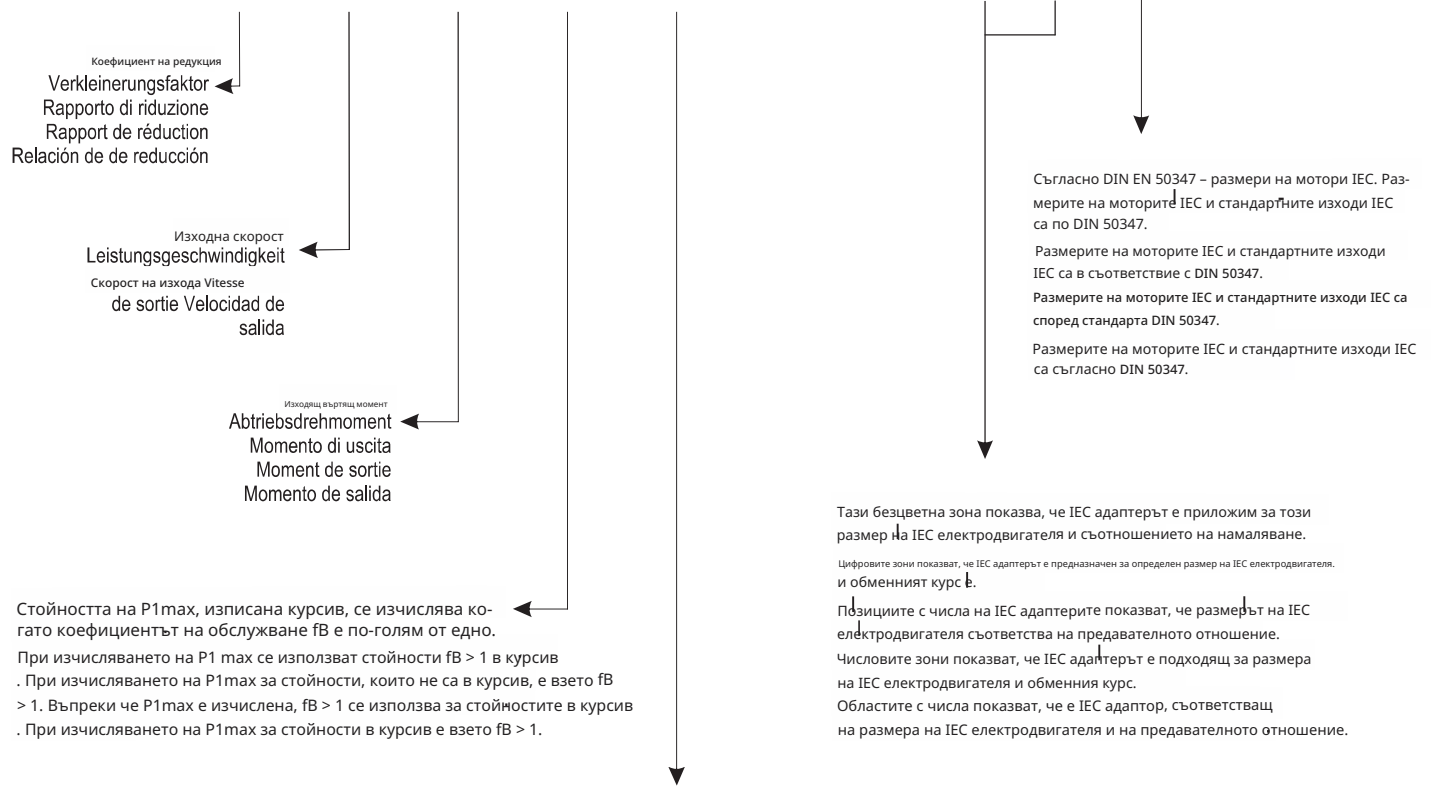


Уведомление за таблиците с технически характеристики за адаптери от тип W и IEC
 Структура на таблица за производителността за W - IEC и PAM - адаптер
 от таблиците с характеристики на адаптерите W - IEC и PAM Структурата
 от таблицата с производителност за W - адаптер IEC и PAM Структура на
 Таблицы с производителност за адаптер W - IEC и PAM

K35390 → Тип мотор-редуктор / Getriebemotortyp / Тип на двигателя с предавки / Type du moteur à engrenages / Тип на мотора с предавки

Коефициентът на обслужване f_B може да бъде видян в таблиците за избор на мотор-редуктор. Тъй като тази стойност е еднаква за мотор-редуктор и мотор-редуктор с IEC адаптери.
 Бетрибсфакторът f_B се взема от страницата за избор на мотори; за редуктори с IEC монтаж, размерът на корпуса на мотора и корпусът по IEC са еднакви. За редуктори с IEC монтаж, при които размерът на корпуса на двигателя е равен на размера на IEC корпуса на двигателя, коефициентът на обслужване може да бъде определен въз основа на избора на двигатели f_B .
 Факторът на обслужване f_B може да бъде взет от страницата за избор на двигател, за редуктори с IEC монтаж, при които размерът на корпуса на двигателя и IEC размерът на корпуса са еднакви.
 Факторът на обслужване за редуктори с IEC монтаж и със същ размер на корпуса на IEC и корпуса на двигателя може да бъде намерен на страниците за избор на f_B на двигателя.

Тип Typ / Tipo Type / Tipo	i_{ges}	4 - пол. 50Hz 1400rpm n_2 [min ⁻¹]	M_{amax} $f_B=1$ 4-Тюл. [Nm]	P_{1max} W $f_B \geq 1$				PAM - IEC						
				4 макс. 1400rpm [kW]	FR1 [kN]	FR2A [kN]	FR2B [kN]							
K35390	158.67	8.9	600	0.62	1.1	12.0	6.3	63	71	80				
	140.25	10.1	600	0.70	1.1	12.0	6.1	63	71	80				
	125.18	11.3	600	0.79	1.1	12.0	5.8	63	71	80				
	112.63	12.5	600	0.87	1.1	12.0	5.6	63	71	80				
	102.00	13.8	600	0.97	1.1	12.0	5.4	63	71	80				
	91.04	15.5	600	1.08	1.1	12.0	5.2	63	71	80				
	78.09	18.1	600	1.26	1.1	12.0	4.9	63	71	80	90			
	69.70	20.2	600	1.41	1.0	12.0	4.7	63	71	80	90			



Стойностите на P_{1max} , които не са в курсив, са изчислени при коефициент на обслужване f_B , равен на едно.*
 При изчисляване на максималната задвижваща сила тип W не се вземат стойности в курсив. f_B с $P_{1max} = 1$
 При изчисляване на максималната задвижваща сила тип W са взети стойности, които не са в курсив. P_{1max} и $f_B = 1$
 Въпреки че е изчислена максималната задвижваща сила тип W, курсивните стойности не са използвани. f_B с $P_{1max} = 1$
 Не са използвани стойности в курсив при изчисляване на задвижваща сила тип W. P_{1max} с $f_B = 1$

Тип Typ / Tipo / Type / Тіро	iges	4 - пол. 50Hz 1400rpm n ₂ [min ⁻¹]	M _{amax} f _a =1 [Nm]	P _{1max} W f _B ≥ 1				PAM - IEC					
				4 - пол. 1400rpm [kW]	FR1 [kN]	FR2A [kN]	FR2B [kN]						
K35390	158.67	8.9	600	0.62	1.1	12.0	6.3	63	71	80			
	140.25	10.1	600	0.70	1.1	12.0	6.1	63	71	80			
	125.18	11.3	600	0.79	1.1	12.0	5.8	63	71	80			
	112.63	12.5	600	0.87	1.1	12.0	5.6	63	71	80			
	102.00	13.8	600	0.97	1.1	12.0	5.4	63	71	80			
	91.04	15.5	600	1.08	1.1	12.0	5.2	63	71	80			
	78.09	18.1	600	1.26	1.1	12.0	4.9	63	71	80	90		
	69.70	20.2	600	1.41	1.0	12.0	4.7	63	71	80	90		
	57.38	24.6	600	1.72	1.0	12.0	4.3		71	80	90	100	112
	51.21	27.6	600	1.92	1.0	12.0	4.1		71	80	90	100	112
	43.56	32.4	600	2.26	1.0	12.0	3.9		71	80	90	100	112
	38.88	36.3	600	2.53	0.9	12.0	3.7		71	80	90	100	112
	33.70	41.9	600	2.92	0.9	12.0	3.5		71	80	90	100	112
	28.25	49.9	600	3.49	0.8	11.4	3.3			80	90	100	112
	26.30	53.7	600	3.75	0.8	11.1	3.2			80	90	100	112
	22.50	62.5	600	4.36	0.7	10.4	3.0		71	80	90	100	112
	17.08	82.3	600	5.75	0.6	9.2	2.6		71	80	90	100	112
	15.25	92.3	590	6.33	0.5	8.9	2.5		71	80	90	100	112
	13.21	106.5	590	7.31	0.4	8.3	2.4		71	80	90	100	112
	12.41	113.3	580	7.65	0.4	8.1	2.3			80	90	100	112
	11.08	127.0	540	7.98	0.3	7.9	2.3			80	90	100	112
	10.31	136.4	520	8.25	0.3	7.8	2.2			80	90	100	112
	9.20	152.8	460	8.18	0.3	7.7	2.2			80	90	100	112
	7.36	191.2	350	7.79	0.4	7.5	2.1		71	80	90	100	112
6.91	203.5	340	8.05	0.3	7.3	2.1			80	90	100	112	
5.74	245.0	290	8.27	0.3	7.0	2.0			80	90	100	112	

Тип Typ / Тіро / Type / Тіро	iges	4 -пол. 50Hz 1400rpm n ₂ [min ⁻¹]	M _{amax} f _B =1 [Nm]	P _{1max} W f _B ≥ 1				PAM - IEC					
				4- пол. 1400rpm [kW]	FR1 [kN]	FR2A [kN]	FR2B [kN]						
K40390	142.18	9.8	850	0.97	2.5	18.0	9.5	80	90	100	112		
	124.46	11.2	850	1.11	2.5	18.0	9.1	80	90	100	112		
	114.17	12.3	850	1.21	2.5	18.0	8.8	80	90	100	112		
	103.40	13.5	850	1.34	2.5	18.0	8.5	80	90	100	112		
	98.70	14.2	850	1.40	2.5	18.0	8.3	80	90	100	112	132	
	90.52	15.5	850	1.53	2.5	18.0	8.1	80	90	100	112		
	79.26	17.7	850	1.75	2.5	18.0	7.7	80	90	100	112	132	
	71.78	19.5	850	1.93	2.5	18.0	7.4	80	90	100	112	132	
	67.78	20.7	850	2.04	2.5	18.0	7.2	80	90	100	112	132	
	62.47	22.4	850	2.22	2.5	18.0	7.0	80	90	100	112	132	
	58.81	23.8	850	2.35	2.5	18.0	6.9	80	90	100	112	132	
	54.43	25.7	850	2.54	2.5	18.0	6.7	80	90	100	112	132	
	50.17	27.9	850	2.76	2.5	18.0	6.5	80	90	100	112	132	
	44.78	31.3	850	3.09	2.5	18.0	6.2	80	90	100	112	132	
	42.28	33.1	850	3.27	2.5	18.0	6.0	80	90	100	112	132	
	38.97	35.9	850	3.55	2.5	18.0	5.9	80	90	100	112	132	
	33.95	41.2	850	4.08	2.5	18.0	5.5	80	90	100	112	132	
	31.29	44.7	850	4.42	2.5	18.0	5.4	80	90	100	112	132	
	28.83	48.6	850	4.80	2.4	18.0	5.2	80	90	100	112	132	
	26.11	53.6	850	5.30	2.3	17.6	5.0	80	90	100	112	132	
	22.40	62.5	850	6.18	2.2	16.5	4.7	80	90	100	112	132	
	17.98	77.8	850	7.70	2.0	15.1	4.3	80	90	100	112	132	
	16.29	86.0	850	8.50	1.9	14.5	4.1	80	90	100	112	132	
	14.11	99.2	810	9.35	1.8	13.9	4.0	80	90	100	112	132	
	11.33	123.6	750	10.78	1.7	12.9	3.7	80	90	100	112	132	
	10.26	136.4	650	10.32	1.7	12.8	3.7	80	90	100	112	132	
8.63	162.2	600	11.32	1.6	12.0	3.4	80	90	100	112	132		
7.82	179.1	500	10.41	1.7	12.0	3.4	80	90	100	112	132		

Тип Typ / Про / Type / Tipo	iges	4 - пол. 50Hz 1400rpm n ₂ [min ⁻¹]	M _{amax} f _a =1 4- пол. [Nm]	P _{1max} W f _B ≥ 1				PAM - IEC					
				4 - пол. 1400rpm [kW]	FR1 [kN]	FR2A [kN]	FR2B [kN]						
K50390	161.23	8.7	1800	1.82	2.8	22.0	11.8	80	90	100	112		
	141.14	9.9	1800	2.08	2.7	22.0	11.2	80	90	100	112		
	129.64	10.8	1800	2.26	2.7	22.0	10.9	80	90	100	112		
	117.49	11.9	1800	2.50	2.7	22.0	10.5	80	90	100	112		
	111.93	12.5	1800	2.62	2.7	22.0	10.3	80	90	100	112	132	
	102.86	13.6	1800	2.85	2.7	22.0	10.0	80	90	100	112		
	90.00	15.6	1800	3.26	2.6	22.0	9.5	80	90	100	112	132	
	81.57	17.2	1800	3.59	2.6	22.0	9.1	80	90	100	112	132	
	76.87	18.2	1700	3.60	2.6	22.0	9.0	80	90	100	112	132	
	70.84	19.8	1700	3.91	2.5	22.0	8.7	80	90	100	112	132	
	66.83	20.9	1700	4.14	2.5	22.0	8.5	80	90	100	112	132	
	63.93	21.9	1700	4.33	2.5	22.0	8.3	80	90	100	112	132	
	56.96	24.6	1700	4.86	2.4	22.0	8.0	80	90	100	112	132	
	51.63	27.1	1700	5.36	2.4	22.0	7.7	80	90	100	112	132	
	48.89	28.6	1700	5.66	2.3	22.0	7.6	80	90	100	112	132	
	46.59	30.0	1700	5.94	2.3	22.0	7.4	80	90	100	112	132	
	43.91	31.9	1700	6.31	2.2	22.0	7.2	80	90	100	112	132	
	40.46	34.6	1700	6.84	2.2	22.0	7.0	80	90	100	112	132	
	35.30	39.7	1700	7.84	2.1	22.0	6.6	80	90	100	112	132	
	32.54	43.0	1700	8.51	2.0	22.0	6.4	80	90	100	112	132	
	29.67	47.2	1600	8.78	2.0	22.0	6.3	80	90	100	112	132	160
	25.65	54.6	1500	9.53	1.9	21.1	6.0	80	90	100	112	132	160
	23.26	60.2	1400	9.80	1.8	20.4	5.8	80	90	100	112	132	160
	18.70	74.9	1400	12.19	1.6	18.7	5.3	80	90	100	112	132	160
	16.95	82.6	1400	13.45	1.4	18.0	5.1	80	90	100	112	132	160
	14.65	95.6	1200	13.34	1.4	17.6	5.0	80	90	100	112	132	160
	11.78	118.8	1000	13.83	1.4	16.7	4.8	80	90	100	112	132	160
	10.68	131.1	1000	15.25	1.2	16.1	4.6	80	90	100	112	132	160
	8.98	156.0	900	16.32	1.0	15.1	4.3	80	90	100	112	132	160
	8.13	172.1	800	16.03	1.1	14.9	4.2	80	90	100	112	132	160

Тип Typ / Тіро / Type / Тіро	iges	4-пол. 50Hz 1400rpm n ₂ [min ⁻¹]	M _{amax} f _B =1 [Nm]	P _{1max} W f _B ≥ 1				PAM - IEC					
				4-пол. 1400rpm [kW]	FR1 [kN]	FR2A [kN]	FR2B [kN]						
K60390	183.08	7.6	3500	3.11	3.9	30.0	14.8	90	100	112	132		
	162.63	8.6	3500	3.51	3.8	30.0	14.0	90	100	112	132		
	146.59	9.6	3500	3.89	3.8	30.0	13.4	90	100	112	132		
	131.96	10.6	3500	4.32	3.8	30.0	12.8	90	100	112	132		
	121.39	11.5	3500	4.70	3.8	30.0	12.3	90	100	112	132		
	108.31	12.9	3500	5.26	3.8	30.0	11.7	90	100	112	132		
	101.29	13.8	3500	5.63	3.7	30.0	11.3		100	112	132	160	180
	91.30	15.3	3500	6.24	3.7	30.0	10.8		100	112	132	160	180
	81.18	17.2	3500	7.02	3.7	30.0	10.2	90	100	112	132		
	75.60	18.5	3500	7.54	3.6	30.0	9.9		100	112	132	160	180
	70.62	19.8	3300	7.61	3.6	30.0	9.8		100	112	132	160	180
	63.65	22.0	3300	8.44	3.6	30.0	9.3		100	112	132	160	180
	60.34	23.2	3200	8.64	3.6	30.0	9.2		100	112	132	160	180
	55.28	25.3	3200	9.43	3.6	30.0	8.8		100	112	132	160	180
	50.56	27.7	3200	10.31	3.5	29.6	8.5		100	112	132	160	180
	45.57	30.7	3000	10.72	3.5	29.0	8.3		100	112	132	160	180
	41.26	33.9	2800	11.05	3.5	28.5	8.2		100	112	132	160	180
	35.25	39.7	2800	12.94	3.4	26.5	7.6		100	112	132	160	180
	31.77	44.1	2800	14.36	3.3	25.1	7.2		100	112	132	160	180
	31.39	44.6	2800	14.53	3.3	24.9	7.1				132	160	180
	28.11	49.8	2800	16.22	3.2	23.6	6.7				132	160	180
	26.31	53.2	2800	17.33	3.2	22.8	6.5		100	112	132	160	180
	23.27	60.2	2800	19.60	3.1	21.4	6.1				132	160	180
	21.00	66.7	2500	19.39	3.1	21.6	6.2				132	160	180
	18.92	74.0	2200	18.94	3.1	21.9	6.3				132	160	180
	15.67	89.3	2100	21.83	3.0	20.4	5.8				132	160	180
	14.15	98.9	2100	24.17	2.8	19.4	5.5				132	160	180
	12.75	109.8	2000	25.55	2.8	18.9	5.4				132	160	180
	10.56	132.6	2000	30.85	2.5	17.2	4.9				132	160	180
	9.63	145.4	1800	30.45	2.6	17.5	5.0				132	160	180
7.97	175.8	1500	30.66	2.6	17.3	4.9				132	160	180	

Тип Typ / Тіро / Type / Тіро	iges	4 - пол. 50Hz 1400rpm n ₂ [min ⁻¹]	M _{amax} f _B =1 [Nm]	P _{1max} W f _B ≥ 1				PAM - IEC					
				4- пол. 1400rpm [kW]	FR1 [kN]	FR2A [kN]	FR2B [kN]						
K70390	183.27	7.6	5000	4.44	3.8	45.0	45.0	100	112	132			
	162.98	8.6	5000	5.00	3.8	45.0	45.0	100	112	132	160	180	
	146.38	9.6	5000	5.56	3.8	45.0	45.0	100	112	132	160	180	
	133.53	10.5	5000	6.10	3.8	45.0	45.0	100	112	132	160	180	
	121.96	11.5	5000	6.68	3.8	45.0	45.0	100	112	132	160	180	
	109.54	12.8	5000	7.43	3.7	43.1	43.1	100	112	132	160	180	
	104.68	13.4	5000	7.78	3.7	42.0	42.0	100	112	132			
	93.09	15.0	5000	8.75	3.7	39.7	39.7	100	112	132	160	180	
	83.66	16.7	5000	9.73	3.6	37.9	37.9	100	112	132	160	180	200
	76.27	18.4	5000	10.68	3.6	36.0	36.0	100	112	132	160	180	
	69.66	20.1	5000	11.69	3.6	34.4	34.4	100	112	132	160	180	
	63.37	22.1	5000	12.85	3.5	33.0	33.0	100	112	132	160	180	200
	58.32	24.0	5000	13.96	3.5	31.5	31.5	100	112	132	160	180	200
	53.98	25.9	5000	15.09	3.4	30.2	30.2	100	112	132	160	180	200
	51.92	27.0	5000	15.69	3.4	29.8	29.8	100	112	132	160	180	200
	47.78	29.3	5000	17.05	3.4	28.3	28.3	100	112	132	160	180	200
	43.64	32.1	4800	17.92	3.3	27.7	27.7	100	112	132	160	180	200
	39.27	35.6	4800	19.91	3.3	26.3	26.3			132	160	180	200
	36.20	38.7	4800	21.60	3.2	25.0	25.0	100	112	132	160	180	200
	32.18	43.5	4700	23.79	3.1	23.9	23.9			132	160	180	200
	29.66	47.2	4700	25.81	3.0	22.7	22.7	100	112	132	160	180	200
	27.09	51.7	4600	27.66	3.0	21.9	21.9	100	112	132	160	180	200
	24.90	56.2	4600	30.09	2.9	21.0	21.0			132	160	180	200
	22.43	62.4	4400	31.95	2.8	20.3	20.3			132	160	180	200
	20.40	68.6	4000	31.94	2.8	20.8	20.8			132	160	180	200
	18.38	76.2	3600	31.90	2.8	20.9	20.9			132	160	180	200
	16.79	83.4	3200	31.04	2.8	21.3	21.3			132	160	180	200
	14.23	98.4	3100	35.48	2.7	19.9	19.9			132	160	180	200
	11.65	120.1	3100	43.34	2.4	18.0	18.0			132	160	180	200
	10.64	131.5	3000	45.93	2.3	17.5	17.5			132	160	180	200

Тип Typ / Про / Type / Tipo	iges	4 - пол. 50Hz 1400rpm n ₂ [min ⁻¹]	M _{amax} f _a =1 [Nm]	P _{1max} W f _B ≥ 1				PAM - IEC					
				4- пол. 1400rpm [kW]	FR1 [kN]	FR2A [kN]	FR2B [kN]	132		160		180	
K90390	168.56	8.3	8000	7.73	9.6	65.0	65.0	132	160	180			
	152.10	9.3	8000	8.62	9.5	65.0	65.0	132	160	180			
	136.87	10.2	8000	9.52	9.5	65.0	65.0	132	160	180			
	126.23	11.1	8000	10.32	9.4	65.0	65.0	132	160	180			
	105.17	13.3	8000	12.39	9.4	65.0	65.0	132	160	180	200	225	
	94.90	14.8	8000	13.73	9.3	65.0	65.0	132	160	180	200	225	
	88.87	15.8	8000	14.66	9.3	65.0	65.0	132	160	180			
	85.54	16.4	8000	15.23	9.2	65.0	65.0	132	160	180			
	78.76	17.8	8000	16.54	9.2	64.1	64.1	132	160	180	200	225	
	72.16	19.4	8000	18.06	9.1	62.1	62.1	132	160	180			
	64.83	21.6	8000	20.10	9.0	59.4	59.4	132	160	180	200	225	
	62.21	22.5	8000	20.95	9.0	58.4	58.4	132	160	180	200	225	
	58.50	23.9	8000	22.27	8.9	57.0	57.0	132	160	180	200	225	
	55.45	25.2	8000	23.50	8.9	55.9	55.9	132	160	180	200	225	
	51.63	27.1	8000	25.24	8.8	54.2	54.2	132	160	180	200	225	
	48.55	28.8	8000	26.84	8.8	52.9	52.9	132	160	180	200	225	
	42.94	32.6	8000	30.35	8.6	50.5	50.5	132	160	180	200	225	
	39.74	35.2	8000	32.79	8.5	48.7	48.7		160	180	200	225	
	35.85	39.1	8000	36.35	8.4	46.7	46.7		160	180	200	225	
	34.18	41.0	8000	38.12	8.3	45.9	45.9	132	160	180	200	225	
	30.84	45.4	8000	42.25	8.1	44.0	44.0	132	160	180	200	225	
	28.71	48.8	8000	45.39	8.0	42.7	42.7	132	160	180	200	225	
	25.60	54.7	6800	43.27	8.1	42.4	42.4	132	160	180	200	225	
	24.50	57.1	6700	44.54	8.0	41.7	41.7		160	180	200	225	
	20.95	66.8	6500	50.54	7.8	39.5	39.5		160	180	200	225	
	18.90	74.1	6000	51.71	7.7	38.6	38.6		160	180	200	225	
	15.69	89.2	5000	51.91	7.7	37.2	37.2		160	180	200	225	
	14.32	97.8	5000	56.87	7.5	35.9	35.9		160	180	200	225	
	12.92	108.5	4500	56.73	7.5	35.1	35.1		160	180	200	225	
	10.72	130.6	4500	68.38	7.0	32.7	32.7		160	180	200	225	

Тип Тур / Ipo / Тип / Типо	iges	4 - пол. 50Hz 1400rpm n ₂ [min ⁻¹]	M _{amax} f _a =1 4 пол. [Nm]	P _{1max} W f _B ≥ 1			PAM - IEC							
				4 - пол. 1400rpm [kW]	FR1 [kN]	FR2A [kN]	FR2B [kN]							
K100390	152.74	9.2	13000	13.86	10.0	80.0	65.0	160	180					
	136.95	10.2	13000	15.46	9.9	80.0	65.0	160	180					
	124.56	11.2	13000	17.00	9.9	80.0	65.0	160	180					
	112.66	12.4	13000	18.80	9.8	80.0	65.0	160	180					
	102.47	13.7	13000	20.66	9.8	80.0	65.0	160	180	200				
	94.85	14.8	13000	22.32	9.7	80.0	65.0	160	180	200				
	86.27	16.2	13000	24.55	9.7	80.0	65.0	160	180	200				
	75.56	18.5	13000	28.02	9.6	80.0	65.0	160	180	200				
	68.72	20.4	13000	30.81	9.5	80.0	65.0	160	180	200	225			
	58.01	24.1	13000	36.50	9.4	80.0	65.0	160	180	200	225	250		
	52.76	26.5	13000	40.13	9.3	80.0	65.0	160	180	200	225	250		
	50.31	27.8	13000	42.09	9.2	80.0	65.0	160	180	200	225	250		
	44.36	31.6	12000	44.06	9.2	78.2	65.0	160	180	200	225	250		
	40.07	34.9	12700	51.63	9.0	73.6	65.0	160	180	200	225	250		
	36.96	37.9	12300	54.21	8.9	71.9	65.0	160	180	200	225	250		
	33.62	41.6	11900	57.65	8.8	69.8	65.0	160	180	200	225	250		
	30.33	46.2	11500	61.76	8.7	67.5	65.0	160	180	200	225	250	280	
	28.27	49.5	10200	58.77	8.8	67.7	65.0	160	180	200	225	250		
	26.01	53.8	11100	69.51	8.5	63.9	63.9	160	180	200	225	250	280	
	23.66	59.2	10500	72.29	8.5	62.4	62.4	160	180	200	225	250	280	
	21.43	65.3	10400	79.05	8.3	60.0	60.0	160	180	200	225	250	280	
	19.61	71.4	10700	88.88	8.0	57.1	57.1	160	180	200	225	250		
	17.69	79.2	10400	95.76	7.9	55.1	55.1	160	180	200	225	250	280	
	16.09	87.0	9900	100.22	7.8	53.7	53.7		180	200	225	250	280	
	15.22	92.0	10000	107.02	7.6	52.3	52.3		180	200	225	250	280	
	13.80	101.5	9600	113.31	7.4	50.8	50.8		180	200	225	250	280	
	12.55	111.6	8800	114.21	7.4	50.1	50.1		180	200	225	250	280	
	11.64	120.3	7700	107.75	7.6	50.4	50.4		180	200	225	250	280	
	10.34	135.4	7900	124.45	7.1	47.6	47.6		180	200	225	250	280	
	8.69	161.0	6800	127.46	7.1	46.1	46.1		180	200	225	250	280	